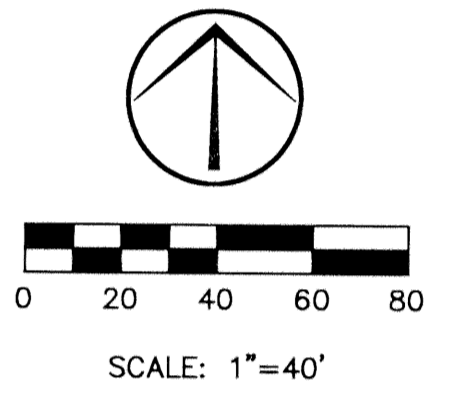
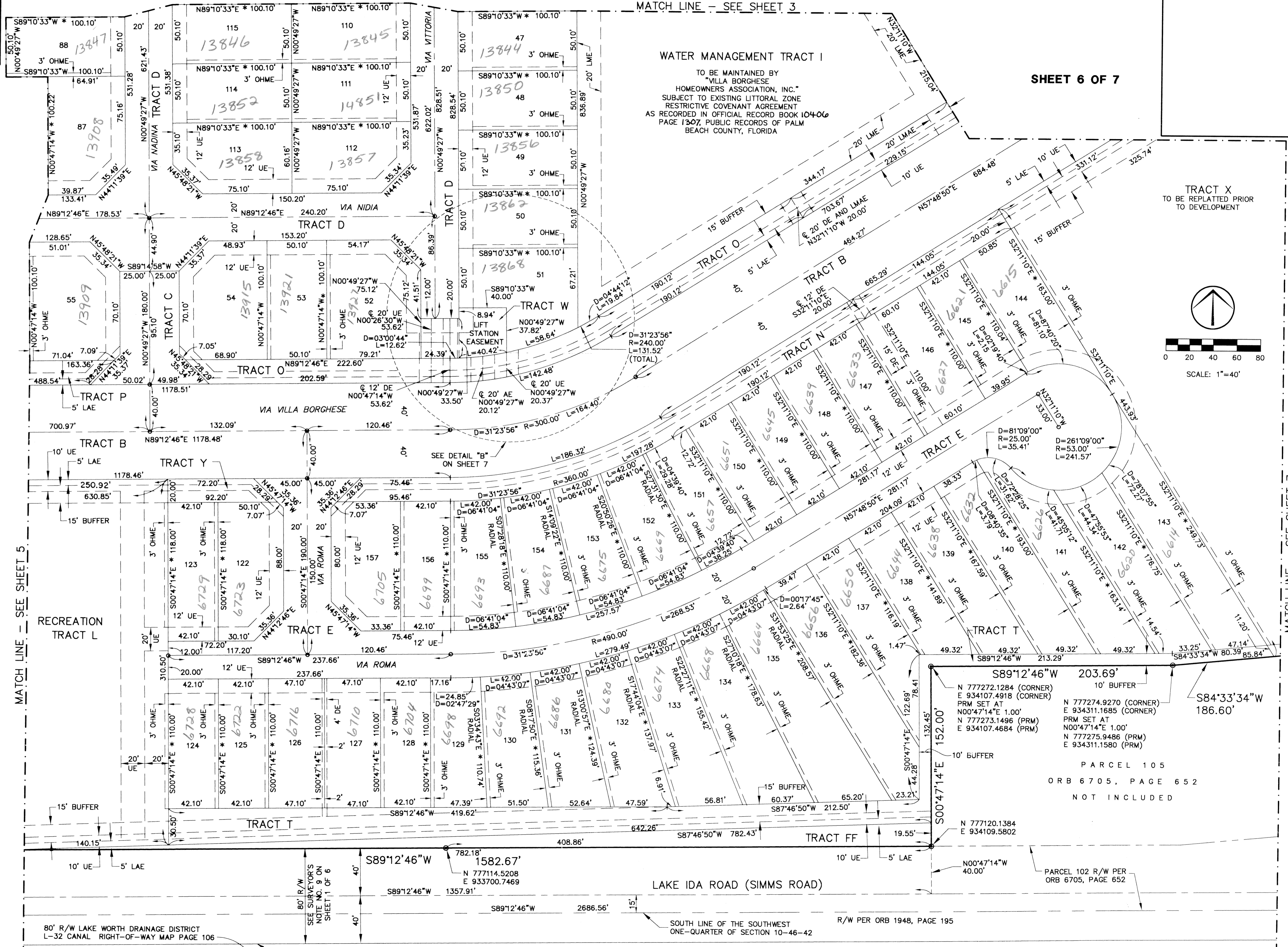
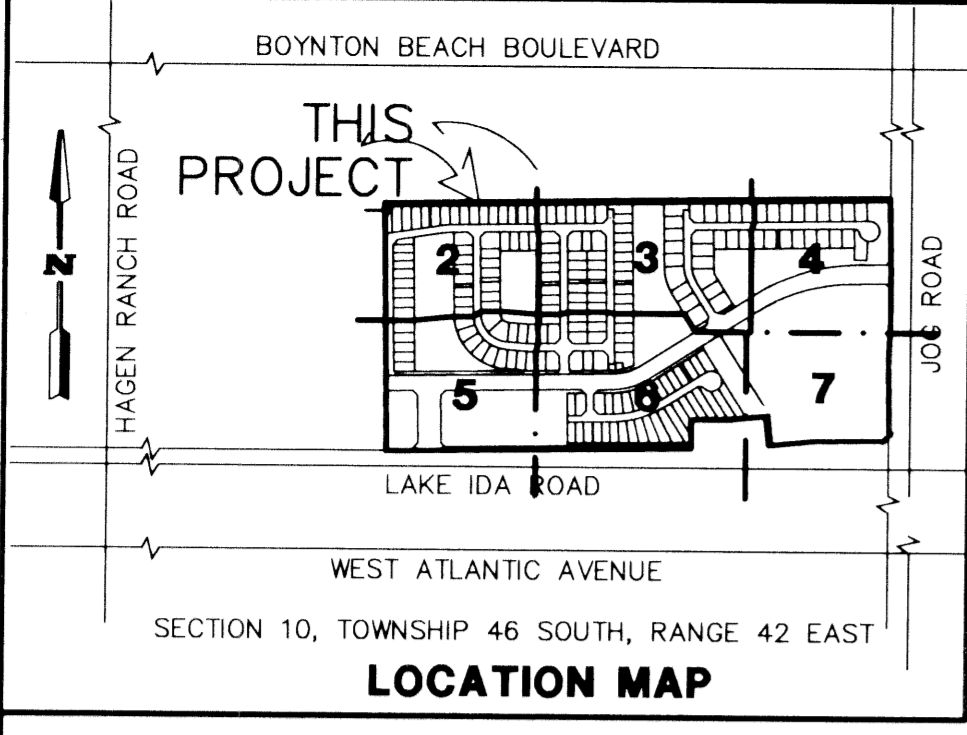


0668-002

HUNTINGTON WALK PLAT NO. 1, A P.U.D.

A PORTION OF THE SOUTH ONE-HALF OF THE SOUTHWEST ONE-QUARTER OF SECTION 10, TOWNSHIP 46 SOUTH, RANGE 42 EAST, PALM BEACH COUNTY, FLORIDA
THIS INSTRUMENT PREPARED BY JAMES E. PARK, P.L.S.
WILLIAMS, HATFIELD & STONER, INC. - ENGINEERS PLANNERS SURVEYORS - 1901 SOUTH CONGRESS AVENUE, SUITE 150, BOYNTON BEACH, FLORIDA 33426

SHEET 6 OF 7



Huntington Walk
Plat #1
PAGE 49
FLOOD MAP #200A
ZONING PUD
QUAD #36
SE 95-54
ZIP CODE 33484
PUD NAME Huntington Walk

TAZ
965

MATCH LINE - SEE SHEET 5

MATCH LINE - SEE SHEET 7

152.00'
S89°12'46"W 203.69'
10' BUFFER
N 777272.1284 (CORNER)
E 934107.4918 (CORNER)
PRM SET AT
N 00°47'14"E 1.00'
E 934107.4684 (PRM)

186.60'
S84°33'34"W
N 777274.9270 (CORNER)
E 934311.1685 (CORNER)
PRM SET AT
N 777273.1496 (PRM)
E 934107.4684 (PRM)

PARCEL 105
ORB 6705, PAGE 652
NOT INCLUDED

N 777120.1384
E 934109.5802

N 00°47'14"W
40.00'

PARCEL 102 R/W PER
ORB 6705, PAGE 652